

Product Parameters

Model	TR-IX2 Pro	
Thermal Imaging	Detector Type	Uncooled infrared detector
	Infrared Resolution	256 × 192
	Super Resolution	512 × 384
	Pixel Size	12μm
	Spectral Band	7.5-14μm
	Thermal Sensitivity (NETD)	<40mK
	Frame Rate	25Hz
	Focal Length	7mm
	Field of View (FOV)	25° × 19°
	Spatial Resolution (IFOV)	1.71mrad
	Focus Mode	Manual focusing
	Minimum Imaging Distance	0.1m
	Image Display	Measurement Range
Measurement Accuracy		±2°C or ±2% of readings (whichever is greater)
Daylight Camera		2 megapixels
Digital Zoom		1 × / 2 × / 4 ×
Measurement and Analysis	Palette	10
	Image Mode	Infrared, visible light, PIP, dual-spectrum fusion
	Temperature Width Stretch	Auto/Manual
Image Storage	Analysis Functions on Device End	Up to 3 movable points, lines, and frames; up to 3 preset templates
	Analysis Report	PDF format, supporting APP-side report generation
	Supporting Software	PC (infrared analysis software) or mobile device (iOS/Android APP)
Video Functions	Storage Medium	Images stored in the APP by default and downloadable to a local album
	Non-radiometric Infrared or Visible Light Video Recording	Standard MP4
System Functions	Radiometric Infrared Video Stream Transmission	TYPE-C connection to PC, for real-time transmission of radiometric infrared video streams
	Video Resolution	512 × 384
System Functions	Communication Protocol	Wi-Fi, Bluetooth, USB
	Voice Control	Voice assistant with quick command recognition
Others	Battery	Built-in 1050mAh lithium-ion battery
	Charging Mode	USB Type-C direct charging
	Battery Life	About 2h
	External Interface	USB Type-C
	Tripod Socket	UNC 1/4-20 interface for the tripod
	Operating Temperature	-10°C~+50°C
	Operating Humidity	10%~95% (non-condensing)
	Storage Temperature	-20°C~+60°C
	IP Grade	IP54
	Shock and Vibration	Shock: 25g (IEC 60068-2-27); Vibration: 2.5g (IEC60068-2-6)
	Weight and Dimensions	About 142g, 136.2 × 41 × 29.3mm
	Authentication	CE/FCC/ROHS/SRRC/DGM/CMA
	Packing List	Thermal camera, Type-C cable, quick start guide, packing list, calibration certificate, certificate of conformity, portable bag

Company Profile

As a wholly-owned subsidiary of Raytron is specialized in innovation and development, manufacturing and marketing of intelligent photoelectric sensing technology. We are deeply engaged in the fields of infrared night vision imaging, thermography, gas imaging and laser sensing, providing professional infrared and laser sensing modules, devices, software and smart industry solutions to our global customers. We have also successfully achieved self-development and large-scale production of intelligent multi-dimensional sensing photoelectric products in diverse forms applicable to various fields. Being a solution provider to public sectors, industries, and commercial markets, we provide a rich portfolio of intelligent photoelectric sensing products, which are widely used in the smart industry, smart robots, gas detection imaging, fire protection and safety, new energy, carbon neutrality, environmental protection, healthcare, etc. Bearing the mission of boosting intelligent photoelectric sensing technology progress, Raythink Technology integrates photoelectricity and smart technology to continuously create incremental value for customers and contribute to building a safe, energy-saving and environmentally friendly society.



*Sample No.: TR-IX2 Pro
 *The content of the product manual was reviewed and approved by our company before its release. The content is subject to change without prior notice.

www.troysupply.com
 info@troysupply.com

TR-IX2 Pro

Wireless Thermal Camera for Smart Devices



Manual focusing



AI real-time super-resolution 512×384



AI voice assistant



Up to 30m wireless image transmission



Compatible with Android & iOS



TR-IX2 Pro

TR-IX2 Pro new wireless thermal camera for smartphones is compatible with Android and iOS devices, enabling wireless image transmission up to 30m away. With the 256×192 thermal imaging resolution, it can achieve four times the AI real-time super-resolution up to 512×384. With the 7mm adjustable focus lens, it is capable of close-range HD imaging. AI Raya voice interaction enables quick parameter setting. It is suitable for industrial scenarios such as circuit board maintenance, electrical maintenance, equipment inspection and HVAC leak detection to efficiently locate thermal hazards.

Versatile Thermal Camera

New Wireless Thermal Camera for Smartphones

- Innovative wireless design, easy to cope with multi-angle observation needs and applied to multiple scenarios
- Wireless image transmission up to 30 meters for real-time control of inspection data
- Fully compatible and adaptable to multiple systems
- Lightweight and compact, and easy to enter narrow spaces to achieve efficient detection



High-Definition Infrared Image

- High-definition thermal imaging: 256×192 thermal imaging resolution
- AI real-time super-resolution: 4× super-resolution up to 512×384, to present a clear thermal image
- WDR temperature measurement range: -20°C~550°C, covering cold and hot scenarios to accurately respond to complex environments



Sensitive to Subtle Temperature Differences

- High thermal sensitivity: <math><40\text{mK}</math> thermal sensitivity, to distinguish subtle temperature differences of 0.04°C
- 25Hz high frame rate imaging, to provide smooth dynamic pictures
- $\pm 2^\circ\text{C}$ or temperature measurement accuracy of $\pm 2\%$ of the reading, to grasp the detailed changes in temperature

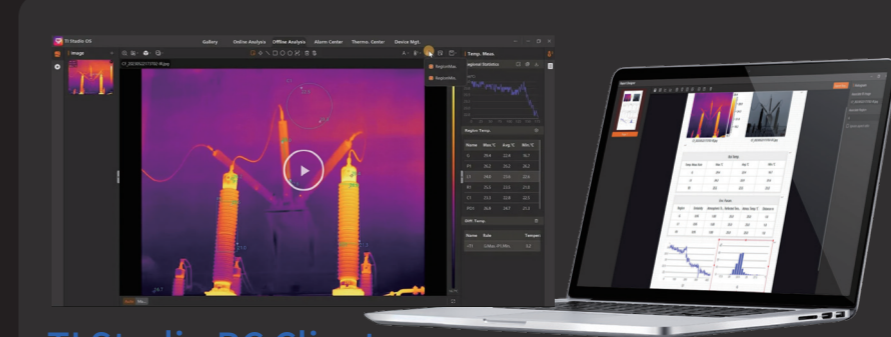


Powerful Configuration

- 7mm adjustable focus lens, flexibly applied to different shooting distances and easy to focus on the target area
- FOV: 25°×19°, enhancing target recognition accuracy
- 2-megapixel visible light imaging, integrated with infrared thermal images, to provide clear and discernible temperature distribution and structural details



Professional Software Platform



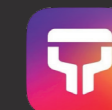
TI Studio PC Client

- Compatible with multiple models of devices and highly adaptive: Improve system versatility and deployment efficiency
- Professional analysis engine with multiple functions: Provide a variety of intelligent processing tools, such as secondary temperature analysis and automatic outline recognition of target images
- Intelligent report generation: One-click export of standard analysis reports, including complete data such as temperature trend charts and key parameters
- Flexible alarm and data management: Support three-level alarm configuration and multi-dimensional data logging

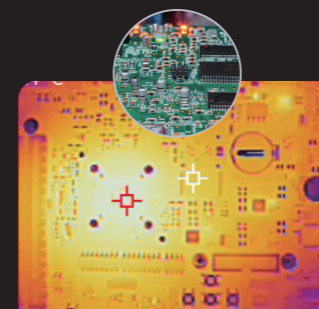


TI Studio Mobile Client

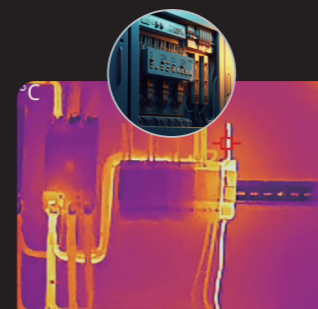
- Real-time preview and control
- Secondary analysis of thermal images
- File management and transmission control



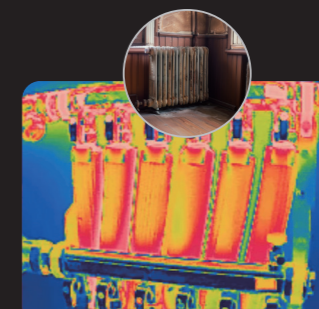
Applications



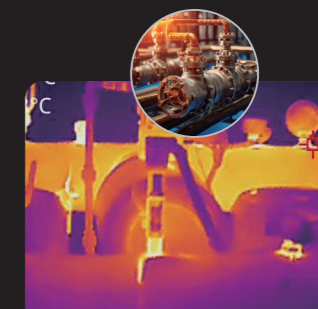
Circuit Board Maintenance



Electrical Maintenance



HVAC Leak Detection



Equipment Inspection